

PENTA

MODULAR



Anchor Wiring Device Warranty Policy

The Company undertakes to repair or replace a product(s) at its discretion, should the product(s) become defective essentially as a result of faulty material and/or workmanship;

- a. Within 10 years in case of Electro mechanical wiring devices product(s) (Switches, Sockets etc but without neon lamp)
- b. Within 2 years in the case of electronic wiring device product(s) (E.g.; Fan Regulators, Dimmers etc.) including indicator modules
- c. Within 2 years for all other wiring devices product(s) & accessories.
- d. The warranty doesn't cover inner frames, cover plates and boxes.

The warranty will be invalidated if a product(s) has not been installed properly or maintained in accordance with the company's instructions and guidelines, Or if any attempt has been made to rectify, dismantle or alter the product(s) Or if the original mounting boxes of the company have not been used in conjunction with the accessories.

The warranty states the company's entire liability as per above only limited to replacement or repair of the product(s) at the sole discretion of the company and it does not cover any other kind of direct, indirect, consequential loss or damage or installation costs arising from the defective product(s).

The Company reserves the right to modify or change the product design in future without notice. In this event, replacements will be done with the then prevailing design.

Everybody's PENTA



Generations Change, Love doesn't!

For over four decades, this love has fuelled our aspiration to touch the hearts of millions of Indians, even in the remotest corner of India. Then, we gave you the switch to light up your homes with ease.

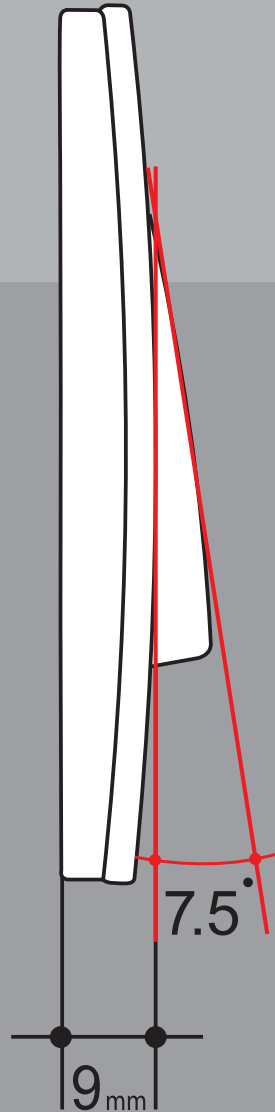
The baby that you held yesterday has grown today to a young adult, filled with youthful aspirations. Ours has been a witness to this growth from a baby to an active teenager to a young and responsible adult. It has been a silent observer through your lifetimes. It has seen the new surge with inspiration from the age-old.

And now it is time to introduce the successor to this rich legacy, a heir that'll make you proud of building priceless moments for the generation next. Carrying the trust of unparalleled safety, the bold yet brilliant aesthetic appeal much akin to your future generation and the promise of retaining the light of love in your life, comes a brand new offering from India's first Piano Switch -Anchor Penta.

Switch on the Joy with Penta Modular. It's truly...A Legacy Reborn!

For Elegant Style & Rich Decor...

- Switches & Accessories in glossy white
- Front removal accessories for easy fitment
- Switches are tested upto "1 Lakh Operations"
- Shock Proof Terminals (IP20 Protection)
- Socket with uniform "Insertion" & "Withdrawal" force



Curves that Entice,
Designed to Delight...

Introducing India's First Fire Retardant Socket

PENTA MODULAR SOCKET

PENTA MODULAR SOCKET DOES NOT DRIPS EVEN AFTER 3 MINUTES OF CONTINUOUS FLAME



ORDINARY SOCKET
OTHER BRANDS SOCKETS CATCH FIRE, DRIP AND THEIR SHAPE IS DISTORTED



40% Larger Hole for Looping



Tested with 1,00,000 Operations



100% Safety



Zero Slippage Captive Screws



Million Happy Customers



SWITCHES				
CODE	DESCRIPTION	HSN CODE	MRP ₹	PKD
65001	6AX, 1 Way Switch, 1M	8536	30/-	20
65002	6AX, 2 Way Switch, 1M	8536	62/-	20
65003	6A, Bell Push, 1M	8536	63/-	20
65066	6A, Bell Push with Neon, 2M	8536	90/-	10
65007	16AX, 1 Way Switch, 1M	8536	76/-	10
65008	16AX, 2 Way Switch, 1M	8536	99/-	10
65010	16A, 2 Way Switch 2M	8536	119/-	10
65077	16AX, 1 Way Switch with Neon, 1M	8536	84/-	10
65025	25A, SP 1 Way Switch with Neon, 1M	8536	108/-	10
65032	32A, DP 1 Way Switch with Neon, 2M	8536	146/-	10



SOCKETS				
65201	6A, Uro 2 Pin Socket, 1M	8536	63/-	10
65202	6A, 2in1 Socket (W/O Shutter), 2M	8536	80/-	10
65222	6A, 2in1 Socket (With Shutter), 2M	8536	84/-	10
65203	6A, 3Pin Socket, 2M	8536	76/-	10
65204	16A, 3pin Socket, 2M	8536	131/-	10
65205	6/16A, Twin Socket, 2M	8536	130/-	10
65206	6/10/13A, Combi Socket For All Pins, 2M	8536	131/-	10



SUPPORT FUNCTION				
65501	Cord outlet, 1M	8536	53/-	20
65502	TV Socket outlet Single, 1M	8536	69/-	20
65503	Blank Plate Single, 1M	8536	17/-	50
65504	Neon Indicator Red, 1M	8536	58/-	20
65508	Resettable Fuse Unit 6A 240V~	8536	94/-	20
65509	Resettable Fuse Unit 16A 240V~	8536	112/-	20
65505	USB Charger, 1M 1000mA, 5V DC	8536	666/-	20
65710	Buzzer, 2M	8536	116/-	10

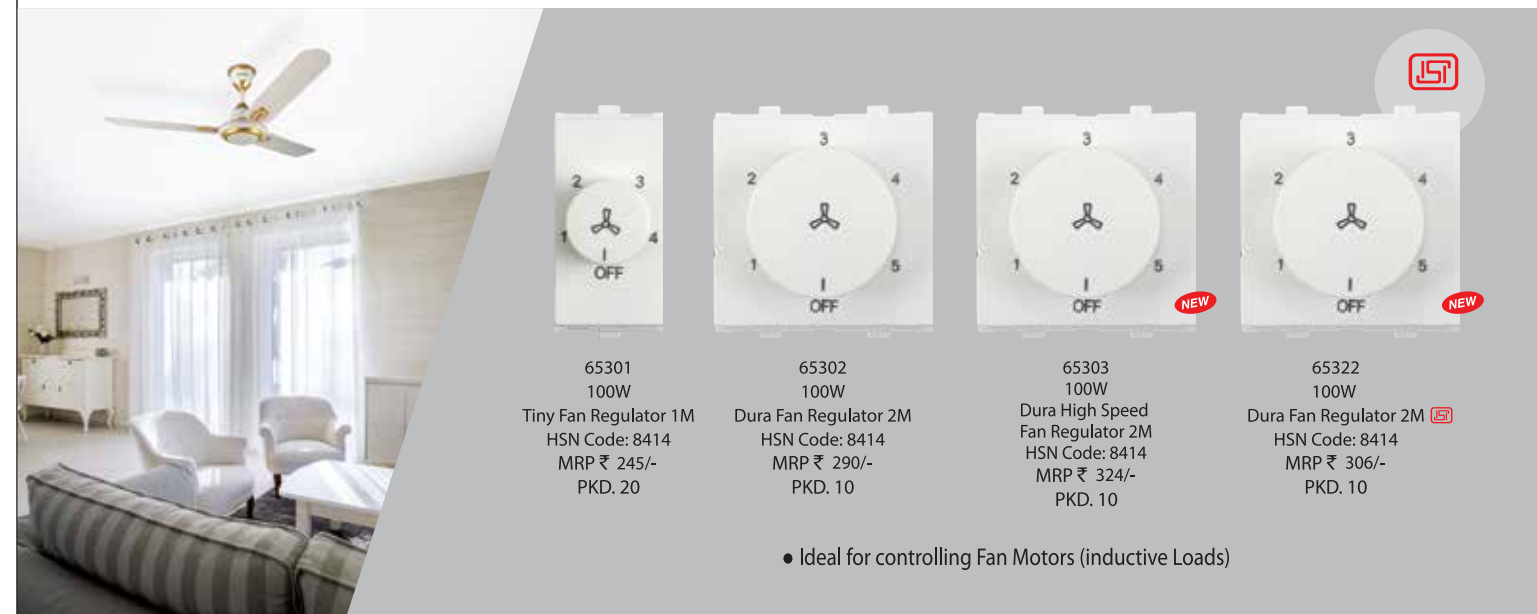


COMMUNICATION AND DATA SOCKET				
65610	RJ11, Tel Jack with Shutter, 1M	8536	74/-	20
65620	RJ45, Receptor, 1M	8536	122/-	20
65621	Computer Jack RJ45 (Cat5e), 1M	8536	360/-	10
65622	Computer Jack RJ45 (Cat6), 1M	8536	436/-	10



FOOT LIGHT				
65705	Foot Light LED Based with 3M Plate (Cool Day Light) 230V~ 50Hz	9405	365/-	6
65706	Foot Light LED Based with 3M Plate (Warm White Light) 230V~ 50Hz	9405	365/-	6
65705-C	Foot Light LED Based with 3M GINA Plate (Cool Day Light) 230V~ 50Hz	9405	389/-	6
65706-C	Foot Light LED Based with 3M GINA Plate (Warm White Light) 230V~ 50Hz	9405	389/-	6

Adds Elegance To Your Interior...



65301 100W Tiny Fan Regulator 1M HSN Code: 8414 MRP ₹ 245/- PKD. 20	65302 100W Dura Fan Regulator 2M HSN Code: 8414 MRP ₹ 290/- PKD. 10	65303 100W Dura High Speed Fan Regulator 2M HSN Code: 8414 MRP ₹ 324/- PKD. 10	65322 100W Dura Fan Regulator 2M HSN Code: 8414 MRP ₹ 306/- PKD. 10
--	--	---	--

• Ideal for controlling Fan Motors (inductive Loads)



65401 450W Tiny Dimmer 1M HSN Code: 8538 MRP ₹ 182/- PKD. 20	65402 650W Dura Dimmer 2M HSN Code: 8538 MRP ₹ 282/- PKD. 10
--	--

• Ideal for controlling Incandescent bulbs and Halogen Bulbs (Resistive Loads)

Why Dimmers should not be used to control fan regulator??

Dimmers can control resistive load but are not suitable for controlling Inductive and Capacitive loads (Fans)

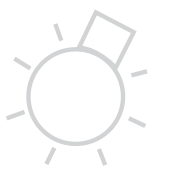
Dimmers are used to dim the light sources upto 5%-10% and that power cannot control your fan speed. This results in the Dimmer / Fan being overheated

*Using an incorrect controller such as a Dimmer can lead to burning in some cases

Environment Controllers to Build up the mood

We do not recommend to connect dimmer Unit to control FAN/Motor for the following reasons.

- ⚡ Humming sound may come from the Fan/Motor.
- ⚡ Increases possibility of damage to the dimmer unit.
- ⚡ Dimmer unit may over heat.
- ⚡ Fan Performance will be affected.



Manually Resettable Overload Protector Fuse Unit of 6 Amp and 16 Amp Rating

- 6A and 16A Manual Resettable Fuse Unit
- Push Button to Manually Reset
- Maintenance Free
- No Need to Replace / Rewired When Blown
- Easy Installation (Snap Fit) like other Penta Modular Accessories



Key Card



65703



65703-C

CODE	DESCRIPTION	HSN CODE	MRP ₹	PKD
65703	Keycard Unit with 30 sec delay with 3M plate, 240V~ 20A (Without Card)	8536	1615/-	6
65703-C	Keycard Unit with 30 sec delay with 3M GINA Plate, 240V~ 20A (Without Card)	8536	1638/-	6

Shaver Socket



65707



65707-C

CODE	DESCRIPTION	HSN CODE	MRP ₹	PKD
65707	Shaver Socket with Regular Plate 240V~ 20A	8538	1703/-	6
65707-C	Shaver Socket with GINA Plate 240V~ 20A	8538	1736/-	6

DND MMR Unit



65708



65709

CODE	DESCRIPTION	HSN CODE	MRP ₹	PKD
65708	DND MMR Internal Unit 2M	8536	344/-	6
65709	DND MMR External Unit 3M	8536	515/-	6



Mini Modular MCB



CODE	DESCRIPTION	HSN CODE	MRP ₹	Outer
Single Pole				
65980	6A SP "C" Mini MCB	8536	173.00	12
65981	10A SP "C" Mini MCB	8536	173.00	12
65982	16A SP "C" Mini MCB	8536	173.00	12
65983	20A SP "C" Mini MCB	8536	179.00	12
65984	25A SP "C" Mini MCB	8536	179.00	12
65985	32A SP "C" Mini MCB	8536	185.00	12
Double Pole				
65989	6A DP "C" Mini MCB	8536	336.00	6
65990	10A DP "C" Mini MCB	8536	336.00	6
65991	16A DP "C" Mini MCB	8536	336.00	6
65992	20A DP "C" Mini MCB	8536	336.00	6
65993	25A DP "C" Mini MCB	8536	336.00	6
65994	32A DP "C" Mini MCB	8536	336.00	6

- ISI marked
- High Breaking Capacity of 3000A(3kA)
- Overload & Short-Circuit protection
- Longer Electrical and Mechanical Life
- IP20 Degree of Protection
- A protection device added in Penta Modular series
- Per Point protection suitable with Penta Modular Mini MCB



Additional Safety from Penta Modular to Safeguard Your Valuable Appliances...

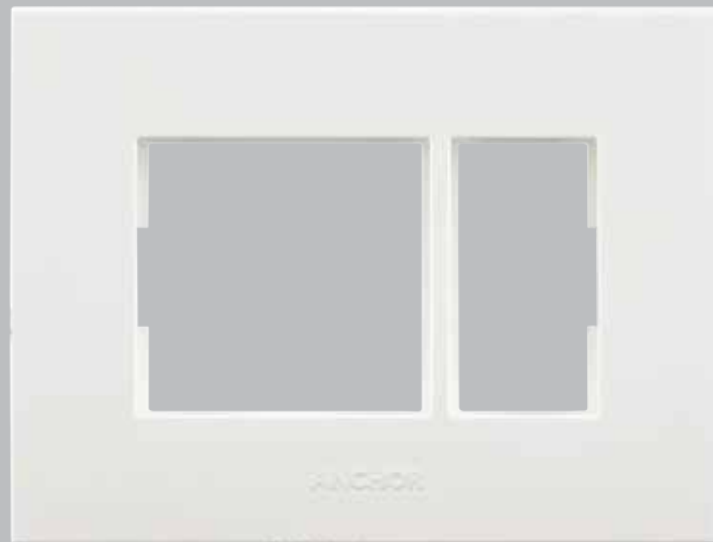






Regular Plates

GINA Plates



MODULE	1 MODULE	2 MODULE	3 MODULE	4 MODULE	6 MODULE	8 MODULE HORIZONTAL	8 MODULE VERTICAL	12 MODULE	16 MODULE	18 MODULE
Regular PLATES	65901	65902	65903	65904	65906	65908	65988	65912	65916	65918
MRP ₹ Per Unit	51	51	71	81	117	153	153	184	196	207
HSN CODE	8538	8538	8538	8538	8538	8538	8538	8538	8538	8538
PKG	20	20	20	20	10	10	5	5	5	5

* Do not use " Hard Cleaning Agent" for cleaning purpose.



MODULE	1 MODULE	2 MODULE	3 MODULE	4 MODULE	6 MODULE	8 MODULE HORIZONTAL	8 MODULE VERTICAL	12 MODULE	16 MODULE	18 MODULE
GINA PLATES	65801	65802	65803	65804	65806	65808	65888	65812	65816	65818
MRP ₹ Per Unit	58	58	84	91	137	178	178	216	227	243
HSN CODE	8538	8538	8538	8538	8538	8538	8538	8538	8538	8538
PKG	5	5	5	5	5	5	5	5	5	5

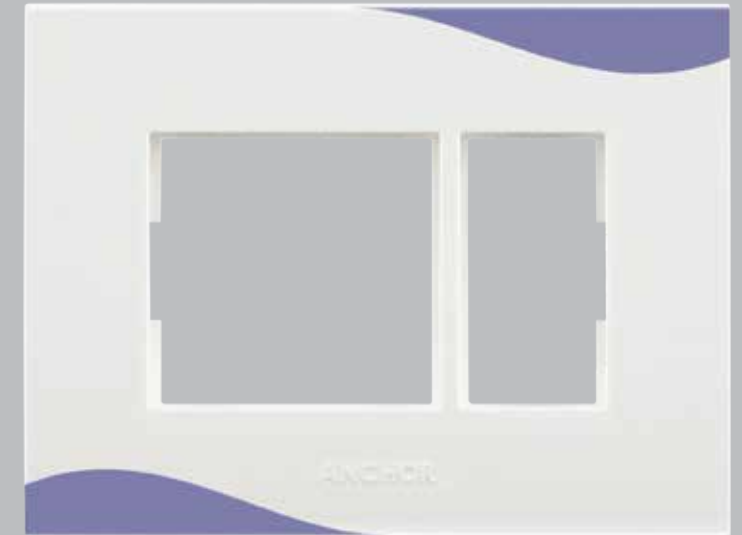
* Do not use " Hard Cleaning Agent" for cleaning purpose.

French Fuchsia



MODULE	1 MODULE	2 MODULE	3 MODULE	4 MODULE	6 MODULE	8 MODULE HORIZONTAL	8 MODULE VERTICAL	12 MODULE	16 MODULE	18 MODULE
CODE NO.	65901FF	65902FF	65903FF	65904FF	65906FF	65908FF	65988FF	65912FF	65916FF	65918FF
MRP ₹ Per Unit	57	57	77	87	128	164	164	198	210	223
HSN CODE	8538	8538	8538	8538	8538	8538	8538	8538	8538	8538
PKG	5	5	5	5	5	5	5	5	5	5

Misty Ocean



MODULE	1 MODULE	2 MODULE	3 MODULE	4 MODULE	6 MODULE	8 MODULE HORIZONTAL	8 MODULE VERTICAL	12 MODULE	16 MODULE	18 MODULE
CODE NO.	65901MO	65902MO	65903MO	65904MO	65906MO	65908MO	65988MO	65912MO	65916MO	65918MO
MRP ₹ Per Unit	57	57	77	87	128	164	164	198	210	223
HSN CODE	8538	8538	8538	8538	8538	8538	8538	8538	8538	8538
PKG	5	5	5	5	5	5	5	5	5	5

Pastel Green



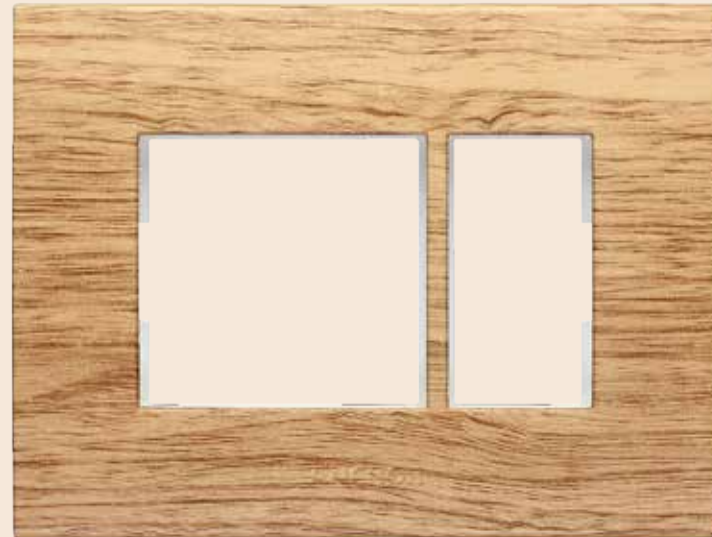
MODULE	1 MODULE	2 MODULE	3 MODULE	4 MODULE	6 MODULE	8 MODULE HORIZONTAL	8 MODULE VERTICAL	12 MODULE	16 MODULE	18 MODULE
CODE NO.	65901PG	65902PG	65903PG	65904PG	65906PG	65908PG	65988PG	65912PG	65916PG	65918PG
MRP ₹ Per Unit	57	57	77	87	128	164	164	198	210	223
HSN CODE	8538	8538	8538	8538	8538	8538	8538	8538	8538	8538
PKG	5	5	5	5	5	5	5	5	5	5

Basalt Grey



MODULE	1 MODULE	2 MODULE	3 MODULE	4 MODULE	6 MODULE	8 MODULE HORIZONTAL	8 MODULE VERTICAL	12 MODULE	16 MODULE	18 MODULE
CODE NO.	65901BG	65902BG	65903BG	65904BG	65906BG	65908BG	65988BG	65912BG	65916BG	65918BG
MRP ₹ Per Unit	57	57	77	87	128	164	164	198	210	223
HSN CODE	8538	8538	8538	8538	8538	8538	8538	8538	8538	8538
PKG	5	5	5	5	5	5	5	5	5	5

Golden Pecan



MODULE	1 MODULE	2 MODULE	3 MODULE	4 MODULE	6 MODULE	8 MODULE HORIZONTAL	8 MODULE VERTICAL	12 MODULE	16 MODULE	18 MODULE
CODE NO.	65901WGP	65902WGP	65903WGP	65904WGP	65906WGP	65908WGP	65988WGP	65912WGP	65916WGP	65918WGP
MRP ₹ Per Unit	128	128	179	200	296	386	386	470	497	527
HSN CODE	8538	8538	8538	8538	8538	8538	8538	8538	8538	8538
PKG	5	5	5	5	5	5	5	5	5	5

Black Ebony



MODULE	1 MODULE	2 MODULE	3 MODULE	4 MODULE	6 MODULE	8 MODULE HORIZONTAL	8 MODULE VERTICAL	12 MODULE	16 MODULE	18 MODULE
CODE NO.	65901WBE	65902WBE	65903WBE	65904WBE	65906WBE	65908WBE	65988WBE	65912WBE	65916WBE	65918WBE
MRP ₹ Per Unit	128	128	179	200	296	386	386	470	497	527
HSN CODE	8538	8538	8538	8538	8538	8538	8538	8538	8538	8538
PKG	5	5	5	5	5	5	5	5	5	5

* Do not use " Hard Cleaning Agent" for cleaning purpose.

Chocolate Hardwood



MODULE	1 MODULE	2 MODULE	3 MODULE	4 MODULE	6 MODULE	8 MODULE HORIZONTAL	8 MODULE VERTICAL	12 MODULE	16 MODULE	18 MODULE
CODE NO.	65901WCH	65902WCH	65903WCH	65904WCH	65906WCH	65908WCH	65988WCH	65912WCH	65916WCH	65918WCH
MRP ₹ Per Unit	128	128	179	200	296	386	386	470	497	527
HSN CODE	8538	8538	8538	8538	8538	8538	8538	8538	8538	8538
PKG	5	5	5	5	5	5	5	5	5	5

* Do not use " Hard Cleaning Agent" for cleaning purpose.

PENTA MODULAR
EXIMA

Feel Privileged Like Never Before





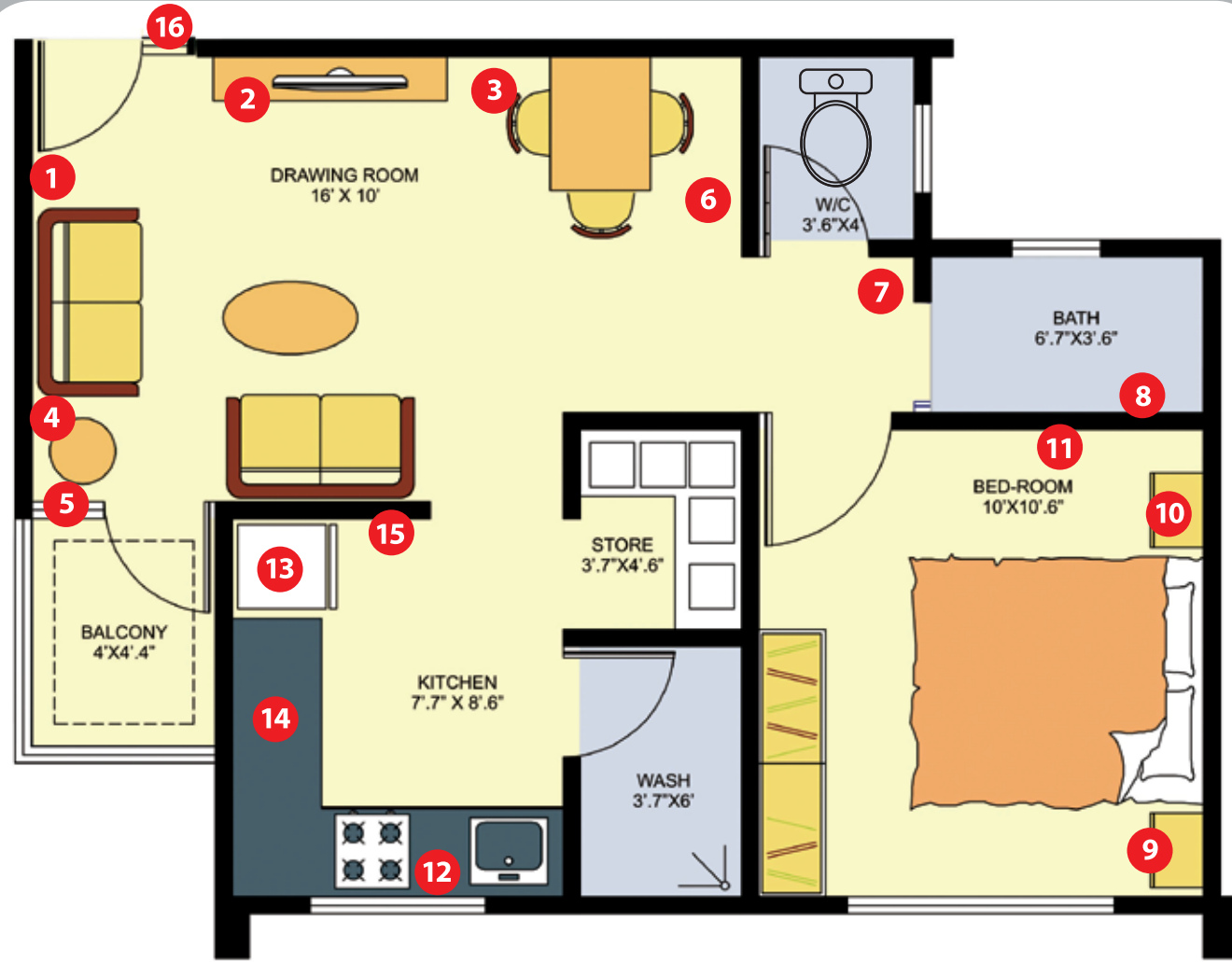
Plates Suitable
for Wooden Boxes...



MODULE	1 MODULE	2 MODULE	3 MODULE	4 MODULE	6 MODULE	8 MODULE SQUARE	8 MODULE HORIZONTAL	10 MODULE HORIZONTAL	12 MODULE	12 MODULE HORIZONTAL	18 MODULE
CODE NO.	65551	65552	65553	65554	65556	65588	65558	65560	65512	65562	65518
MRP ₹ Per Unit	70	70	99	110	163	211	211	214	257	234	288
HSN CODE	8538	8538	8538	8538	8538	8538	8538	8538	8538	8538	8538
PKG	20	20	20	20	10	10	10	10	5	10	5
Dimensions (in inches)	4.5 x 4.5	4.5 x 4.5	5.0 x 4.5	6.5 x 4.5	8.5 x 4.5	6.5 x 6.5	10.6 x 4.5	12.7 x 4.5	8.5 x 6.5	12.7 x 4.5	10.5 x 8.5

* Do not use "Hard Cleaning Agent" for cleaning purpose.

One Bedroom, Hall, Kitchen Layout



Note: This is a schematic diagram of 1 BHK flat with electrical wiring layout.
The 1 BHK flat plan and electrical wiring points may differ from place to place.

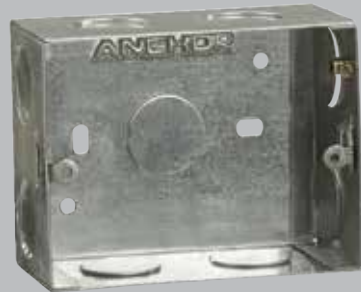
List of Plates & Accessories

- | | | | | | |
|-----------|--|-----------|---|-----------|---|
| 1 | 65001 6AX 1 Way Switch 1M
65504 Neon Indicator Red 1M
65001 6AX 1 Way Switch 1M
65301 100W Tiny Step Regulator 1M
65001 6AX 1 Way Switch 1M
65001 6AX 1 Way Switch 1M
65206 6/10/13 A Combi Socket For All Pins 2M
65908 8 Module Horizontal (Plate with Inner Frame)
65505 USB Charger, 1M 100mA, 5V DC | 2 | 65501 Cord outlet 1M
65001 6AX 1 Way Switch 1M
65202 6A 2in1 Socket (w/o Shutter) 2M
65001 6AX 1 Way Switch 1M
65502 TV Socket outlet Single 1M
65202 6A 2in1 Socket (w/o Shutter) 2M
65908 8 Module Horizontal (Plate with Inner Frame) | 3 | 65610 RJ11, Tel Jack with Shutter 1M
65620 RJ45, Receptor 1M
65902 2 Module (Plate with Inner Frame) |
| 4 | 65001 6AX 1 Way Switch 1M
65402 Dura Dimmer 2M
65903 3 Module Plate (Plate with Inner Frame) | 5 | 65001 6AX 1 Way Switch 1M
65001 6AX 1 Way Switch 1M
65203 6A 3Pin Socket, ISI 2 M
65904 4 Module (Plate with Inner Frame) | 6 | 65001 6AX 1 Way Switch 1M
65504 Neon Indicator Red 1M
65001 6AX 1 Way Switch 1M
65001 6AX 1 Way Switch 1M
65202 6A 2in1 Socket (w/o Shutter) 2M
65001 6AX 1 Way Switch 1M
65001 6AX 1 Way Switch 1M
65301 100W Tiny Step Regulator 1M
65001 6AX 1 Way Switch 1M
65401 450W Tiny Dimmer 1M
65912 12 Module Horizontal Plate (Plate with Inner Frame) |
| 7 | 65001 6AX 1 Way Switch 1M
65001 6AX 1 Way Switch 1M
65001 6AX 1 Way Switch 1M
65001 6AX 1 Way Switch 1M
65202 6A 2in1 Socket (w/o Shutter) 2M
65906 6 Module (Plate with Inner Frame) | 8 | 65025 25 A SP 1 Way Switch with Neon 1M
65205 6/16A Twin Socket 2M
65903 3 Module (Plate with Inner Frame) | 11 | 65206 6/10/13 A Combi Socket For All Pins 2M
65007 1 Way Switch 1M
65903 3 Module (Plate with Inner Frame) |
| 9 | 65001 6AX 1 Way Switch 1M
65001 6AX 1 Way Switch 1M
65201 6A Uro 2 Pin Socket 1M
65504 Neon Indicator Red 1M
65001 6AX 1 Way Switch 1M
65301 100W Tiny Step Regulator 1M
65610 RJ11, Tel Jack with Shutter 1M
65002 6AX 2 Way Switch 1M
65908 8 Module Horizontal (Plate with Inner Frame) | 10 | 65001 6AX 1 Way Switch 1M
65001 6AX 1 Way Switch 1M
65206 6/10/13 A Combi Socket For All Pins 2M
65002 6AX 2 Way Switch 1M
65077 16A 1 Way Switch with Neon 1M
65402 650W Dura Dimmer 2M
65908 8 Module Horizontal (Plate with Inner Frame)
65705 3M Foot Light (Cool Day Light)
65705-C 3M Foot Light (Warm White Light) | 14 | 65203 6A 3Pin Socket, ISI 2M
65902 2 Module (Plate with Inner Frame) |
| 12 | 65205 6/16A Twin Socket 2M
65007 1 Way Switch 1M
65903 3 Module Plate (Plate with Inner Frame) | 13 | 65203 6A 3Pin Socket, ISI 2M
65001 6AX 1 Way Switch 1M
65903 3 Module (Plate with Inner Frame) | 16 | 65066 6A Bell Push with Neon 2M
65902 2 Module (Plate with Inner Frame) |
| 15 | 65001 6AX 1 Way Switch 1M
65001 6AX 1 Way Switch 1M
65001 6AX 1 Way Switch 1M
65001 6AX 1 Way Switch 1M
65301 100W Tiny Step Regulator 1M
65906 6 Module (Plate with Inner Frame) | | | | |





Concealed Galvanised Metal Boxes



Code	Module	Size(mm)	Depth(mm)	HSN Code	MRP ₹/ Unit	Pkd
CONCEALED GI SHEET METAL BOXES (20 Gauge)						
Concealed Galvanised mounting boxes (Rust Protected)						
21780	1 or 2 Module	79 x 75	46	8538	45/-	10
21452	3 Module	79 x 99	46	8538	61/-	10
21791	4 Module	79 x 135	52	8538	75/-	10
21463	6 Module	79 x 207	52	8538	101/-	10
30453	8 or 9 Module Horizontal	79 x 230	52	8538	131/-	5
21474	8 Module Rectangular	132 x 135	56	8538	131/-	5
21485	12 Module	132 x 207	56	8538	161/-	5
21736	16 Module	142 x 230	56	8538	173/-	5
21758	18 Module	207 x 207	60	8538	190/-	5

Code	Module	Size(mm)	Depth(mm)	HSN Code	MRP ₹/ Unit	Pkd
CONCEALED GI SHEET METAL BOXES (18 Gauge)						
Concealed Galvanised mounting boxes (Rust Protected)						
35640	1 or 2 Module	79 x 75	46	8538	55/-	10
35650	3 Module	79 x 99	46	8538	77/-	10
35661	4 Module	79 x 135	52	8538	94/-	10
35672	6 Module	79 x 207	52	8538	125/-	10
35683	8 or 9 Module Horizontal	79 x 230	52	8538	163/-	5
35394	8 Module Rectangular	132 x 135	56	8538	163/-	5
35708	12 Module	132 x 207	56	8538	201/-	5
35719	16 Module	142 x 230	56	8538	215/-	5
35720	18 Module	207 x 207	60	8538	237/-	5

Code	Module	Size(mm)	Depth(mm)	HSN Code	MRP ₹/ Unit	Pkd
CONCEALED GI SHEET METAL BOXES (16 Gauge)						
Concealed Galvanised mounting boxes						
35785	1 or 2 Module	79 x 75	46	8538	81/-	10
35796	3 Module	79 x 99	46	8538	96/-	10
35800	4 Module	79 x 135	52	8538	124/-	10
35810	6 Module	79 x 207	52	8538	166/-	10
35832	8 or 9 Module Horizontal	79 x 230	52	8538	185/-	5
35821	8 Module Rectangular	132 x 135	56	8538	185/-	5
35843	12 Module	132 x 207	56	8538	236/-	5
35854	16 Module	142 x 230	56	8538	272/-	5
35865	18 Module	207 x 207	60	8538	326/-	5

Metal Boxes

- Rust Protected 120 GSM GI BOXES
- Very long service life
- Good quality threads
- Tested as per IS
- Earthing terminal to avoid shock

NEW

Concealed Stainless Steel Boxes



Concealed Mounting Boxes



Plastic Boxes

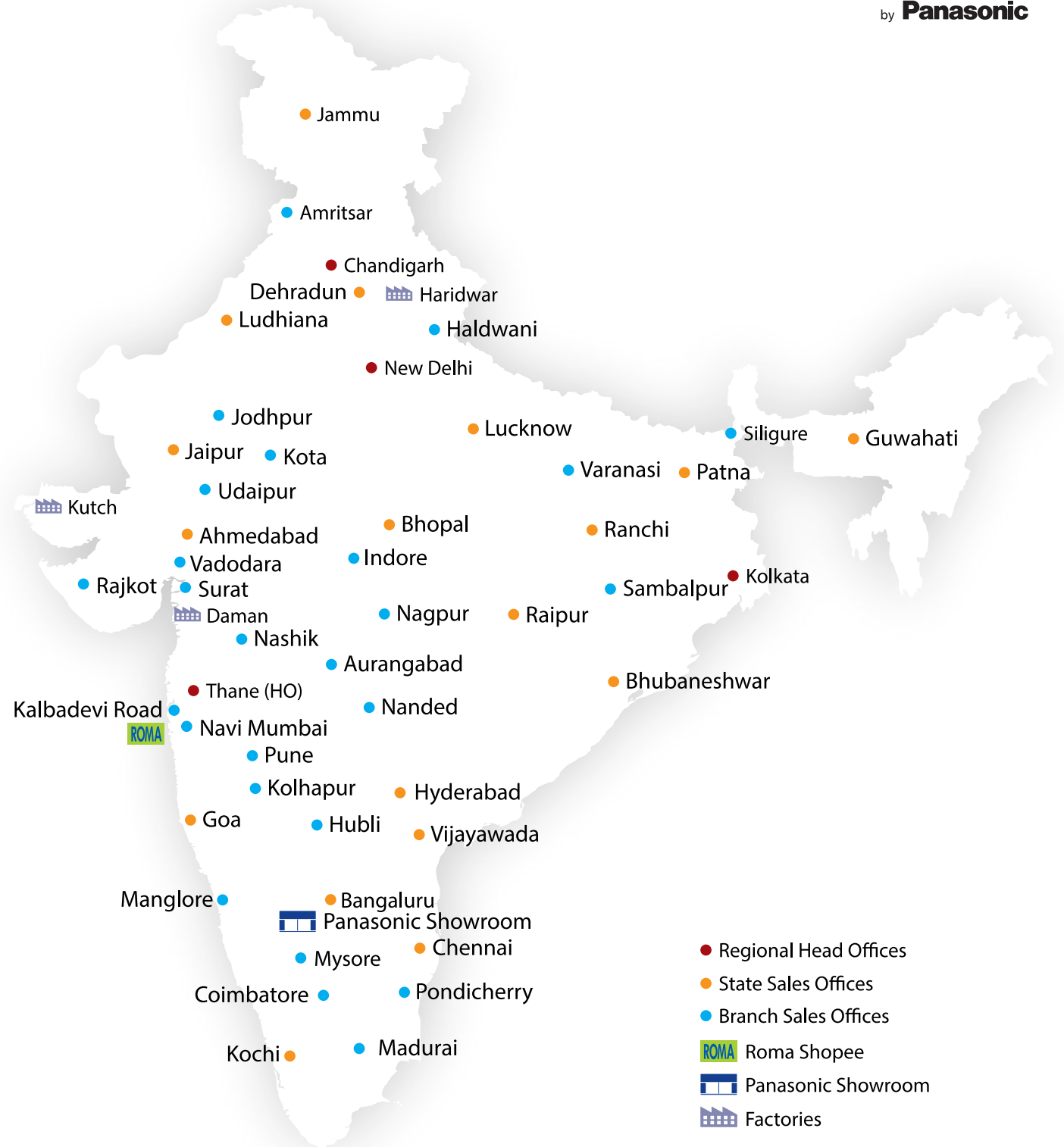
- High quality boxes made with High impact plastics
- Metal thread inserts

Code	Module	Size(mm)	Depth(mm)	HSN Code	MRP ₹/ Unit	Pkd
STAINLESS STEEL METAL BOXES						
36001	1 or 2 Module	79 x 75	46	8538	247/-	10
36002	3 Module	79 x 99	46	8538	285/-	10
36003	4 Module	79 x 135	52	8538	366/-	10
36004	6 Module	79 x 207	52	8538	489/-	10
36006	8 or 9 Module Horizontal	79 x 230	52	8538	576/-	5
36005	8 Module Rectangular	132 x 135	56	8538	576/-	5
36007	12 Module	132 x 207	56	8538	712/-	5
36008	16 Module	142 x 230	56	8538	804/-	5
36009	18 Module	207 x 207	60	8538	972/-	5

Code	Module	Size(mm)	Depth(mm)	HSN Code	MRP ₹/ Unit	Pkd
SURFACE PLASTIC BOXES						
21281	1 or 2 Module	85 x 85	40	8538	45/-	10
20449	3 Module	85 x 115	48	8538	57/-	10
21292	4 Module	85 x 145	48	8538	62/-	10
30511	6 Module	85 x 219	40	8538	81/-	10
30704	8 or 9 Module Horizontal	85 x 248	40	8538	114/-	5
20450	8 Module Rectangular	152 x 145	40	8538	114/-	5
20347	12 Module	153 x 214	40	8538	143/-	5
34567	16 Module	153 x 259	40	8538	153/-	5

*Not suitable for Woods - (Matrix, Stella Plate), Vision & Roma Plates

Code	Module	Size(mm)	Depth(mm)	HSN Code	MRP ₹/ Unit	Pkd
CONCEALED PLASTIC BOXES						
21237	1 or 2 Module	78 x 78	45	8538	35/-	10
21306	3 Module	75 x 103	52	8538	42/-	10
21248	4 Module	76 x 136	46	8538	55/-	10
21259	6 Module	76 x 205	50	8538	81/-	10
30475	8 or 9 Module Horizontal	78 x 229	50	8538	105/-	5
21260	8 Module Rectangular	135 x 133	51	8538	105/-	5
21270	12 Module	135 x 206	51	8538	131/-	5
21408	18 Module	204 x 207	51	8538	166/-	5



- Regional Head Offices
- State Sales Offices
- Branch Sales Offices
- Roma Shopee
- Panasonic Showroom
- Factories

HEAD / REGIONAL OFFICES

WEST (H.O.)

Anchor Electricals Pvt. Ltd.
3rd Floor, B' Wing, I-Think Techno Campus,
Pokhran Road No. 2, Thane (W)
Thane, Maharashtra - 400607 | Tel: (9122) 30418888

EAST

Anchor Electricals Pvt. Ltd.
4th Floor, Block " C ", Apeejay House
15, Park Street, Kolkata, West Bengal - 700 016
Tel: 033-32219196 / 082-32019196

NORTH-1

Anchor Electricals Pvt. Ltd.
SCO-40, 1st Floor, NAC Manimajra, Chandigarh-160101,
Tel: 0172-3255715

NORTH-2

Anchor Electricals Pvt. Ltd.
6th Floor, TDI Centre, Jasola District, New Delhi - 110025
Tel: 011-46006400

SOUTH

Anchor Electricals Pvt. Ltd.
No. 8-12, III Floor, Prestige Nebula - II, Infantry Road,
Bangalore, Karnataka - 560001 | Tel: 080-30284400-40

STATE / SALES OFFICES

NORTH-1

JAMMU

Anchor Electricals Pvt. Ltd.
85/1-1st Floor, Trikuta Nagar,
Jammu - 180012
Tel: 0191-2470735 / 2470736

PUNJAB

B-20/2813/13-A,
3rd Floor, Ranjit Tower,
Pakhawal Road, Gurdev Nagar,
Ludhiana 141001 (Punjab)
Tel: 0161-4630796 / 013-32235077 / 78

AMRITSAR

Anchor Electricals Pvt. Ltd.
45, Deep Complex, Court Road,
Amritsar, Punjab - 143001
Tel: 0183-3292567

UTTARAKHAND

Anchor Electricals Pvt. Ltd.
Khasra No : 332-333-335 & 339,
1st Floor, Main Saharanpur Road,
Niranjanpur, Opp : Institute of
Hotel Management, HCL Compound,
Dehradun - 248 001
Tel: 0135-3241686

HALDWANI

Anchor Electricals Pvt. Ltd.
Shop No. U-28, Upper Ground Floor
Phase - 1, Durga City Centre
Haldwani - 263 141

NORTH-2

JAIPUR

Anchor Electricals Pvt. Ltd.
224-225, 2nd Floor, Ganpati Plaza
M.I. Road Jaipur,
Rajasthan - 302001
Tel: 0141-3007666 / 2331369

UDAIPUR

Anchor Electricals Pvt. Ltd.
4C/201, Riddhi Siddhi
Complex, Madhuvan, Udaipur,
Rajasthan - 313001
Tel: 0294-2422412

JODHPUR

Anchor Electricals Pvt. Ltd.
27/20, Light Industrial Area,
Near ITI Circle Jodhpur 342 003
Tel: 029-12651000

KOTA

Anchor Electricals Pvt. Ltd.
Office No. 6, Plot No. 621, 1st Floor,
Mukesh Plaza, Dadabari, Kota,
Rajasthan - 324009
Tel: 0744-2500368

UTTAR PRADESH

Anchor Electricals Pvt. Ltd.
201, Govinda Building, 1-A,
Shahnaaz Road, Hazratgunj,
Lucknow, Uttar Pradesh - 226001
Tel: 0522-3920999

VARANASI

Anchor Electricals Pvt. Ltd.
P. N. 204, H No. C-27/274 A-3,
S-1, 2nd Floor, Dr. Jai Singh
Building, Maldahiya, Varanasi,
Uttar Pradesh - 221001
Tel: 093-07142565

EAST-1

WEST BENGAL

1st Floor, Hanshara House,
Beside City Mall (Bazar Kolkata),
Sevoke Road, Siliguri - 734001

ASSAM

Anchor Electricals Pvt. Ltd.
Duhang Arcade 2A, 2nd Floor,
G. S Road, Tarun Nagar,
Opp. Dona Plannet, Guwahati, Assam - 781005
Tel: 0361-2450577

EAST-2

BIHAR

Anchor Electricals Pvt. Ltd.
F-1, 1st Floor, Gitanjali Palace, Jamal
Road, Patna, Bihar - 800001
Tel: 0612-3297075

ODISHA

Anchor Electricals Pvt. Ltd.
2nd Floor, Creative Plaza, Rasulgarh
Square, Mouza-Bomikhal
Bhubaneswar, Odisha - 751010
Tel: 0674-3240109

SAMBALPUR

Anchor Electricals Pvt. Ltd.
Quality Mansion, 1st Floor, Nayapada,
Sambalpur, Odisha - 768001
Tel: 093-37780450

RANCHI

Anchor Electricals Pvt. Ltd.
509, 5th Floor, R. R. Tower, Opp.
Akashwani, (Near New Market Chawk)
Ratu Road, Ranchi, Jharkhand - 834005
Tel: 0651-3241617

WEST

GOA

Anchor Electricals Pvt. Ltd.
403, Gera Imperium II, 4th Floor,
Patto Panjim, Goa - 403001
Tel: 0832-3294189 / 3193131

PUNE

Anchor Electricals Pvt. Ltd.
Fiith Avenue, office No. E4-A, 4th Floor,
Dhole Patil Road, Pune - 411001
Tel: 020-66207260

NANDED

Anchor Electricals Pvt. Ltd.
101 Millennium Tower, Bhawsar
Chowk, Malegaon Road,
Taroda, Nanded - 431605
Tel: 02462-266855

NAGPUR

Anchor Electricals Pvt. Ltd.
Tapashiya, 1st Floor, Near Rahale
Hospital, Adamsha Chawk,
Nagpur - 440008
Tel: 09370430999

AURANGABAD

Anchor Electricals Pvt. Ltd.
Plot No. 8, Raj Tower, 2nd Floor,
Near Angethi Hotel, Jalna Road,
Aurangabad - 431001
Tel: 0240-6500200

KOLHAPUR

Anchor Electricals Pvt. Ltd.
1st Floor, Office No. 4, Namde Nest
Above Axis Bank, Opp. Kamla College
Rajarampuri, Takala, C. S. No. 1160B
Kolhapur-416001
Tel: 0231-6050945

NASHIK

Anchor Electricals Pvt. Ltd.
Archit Icon, 1st Floor, Patil Lane Road,
Nashik - 422005.

KALBADEVI ROAD

Anchor Electricals Pvt. Ltd.
C-369/485, Takwadi, Behind
Bank of India, 485, Kalbadevi Road,
Mumbai, Maharashtra - 400002
Tel: 022-39567073

NAVI MUMBAI

Anchor Electricals Pvt. Ltd.
Arenja Corner, 3rd Floor, 301,
Sector 17, Vashi, Navi Mumbai,
Maharashtra - 407003
Tel: 022-65551316

CHHATTISGARH

Anchor Electricals Pvt. Ltd.
318-317 (A to E), Ravi Bhavan,
3rd Floor, Jaistambh Chowk,
Raipur - 492001
Tel: 0771-3291701

GUJRAT

Anchor Electricals Pvt. Ltd.
405, 3rd Eye one complex, Opp.
Havmor Restaurant, Panchvati, C.G.
Road, Ahmedabad, Gujarat - 380006
Tel: 079-30063870 / 26460172

SURAT

Anchor Electricals Pvt. Ltd.
403, 4th Floor, Union Trade Centre,
Above Passport Office, Udhana
Darwaja, Ring Road, Surat,
Gujarat - 395002
Tel: 0261-3002008 / 0261-3002009

VADODARA

Anchor Electricals Pvt. Ltd.
306, Atlantis, Near Croma, Genda
Circle Road, Vadodara,
Gujarat - 390007
Tel: 0265-6541992

RAJKOT

Anchor Electricals Pvt. Ltd.
Office No. 502, 5th Floor, King's Plaza,
Astrone Chowk, Sardar Nagar,
Main Road, Rajkot,
Gujarat - 360001
Tel: 0281-3010400

INDORE

Anchor Electricals Pvt. Ltd.
318, 3rd Floor, D.M. Tower, 21/1
Race Course Road, Indore,
Madhya Pradesh - 452003.
Tel: 0731-3952501 / 05

BHOPAL

Anchor Electricals Pvt. Ltd.
201, Manya Arcade, 2nd Floor,
Plot No. 30, MP Nagar, Zone II,
Bhopal, Madhya Pradesh - 462011
Tel: 075-53061815 / 816

SOUTH

TELANGANA

Anchor Electricals Pvt. Ltd.
G2 1-8 384/385, Gowra Grand,
S. P. Road, Begumpet,
Secunderabad,
Andhra Pradesh - 500003
Tel: 040-30482989 / 2999

BANGALORE

Anchor Electricals Pvt. Ltd.
Prestige Nebula - II, 3rd Floor
Block 2nd, Infemity Road, Cubbon Rd
Bangaluru - 560001
Tel: 080-30284400 / 01

MANGALORE

Anchor Electricals Pvt. Ltd.
225, 1st Floor, Ideal Tower
Opp Saravu Ganpathi Temple
Hampanakatta,
MANGALORE - 575 001

MYSORE

Anchor Electricals Pvt. Ltd.
Nakshatra, No. 858/859,
CS 20 K. R. Mohalla, Narayana
Shastry Road, Mysore,
Karnataka - 570024

HUBLI

Anchor Electricals Pvt. Ltd.
A/122-146, 2nd Floor, Mahalaxmi
Mansion, Above Axis Bank,
New Cotton Market
Despande Nagar, Hubli - 580029
Tel: 0836-3296694

ANDHRA PRADESH

Anchor Electricals Pvt. Ltd.
Door No. 39/10/5, V.N.R. Tower,
2nd Floor, Labbipet, Dist, Krishna,
Vijaywada - 520010
Tel: 0866-3056789

KERALA

Anchor Electricals Pvt. Ltd.
K. P. Varkey & Madathiparambi
Complex, 1st Floor, 351/1085D,
Palarivattom, Cochin - 683525
Tel: 0484-3951000 / 01

TAMILNADU

Anchor Electricals Pvt. Ltd.
Level 3, Ispanani Centre, 123-124,
Nungambakkam High Road,
Chennai, Tamilnadu - 600034
Tel: 044-30261700 / 01

COIMBATORE

Anchor Electricals Pvt. Ltd.
Balavasantha Complex, No.1
Bharthi Park, Cross Road 2,
NSR Road, Saibaba Colony
Coimbatore, Tamilnadu - 641 011

MADURAI

Anchor Electricals Pvt. Ltd.
Wise House, Door No.109
Vakil New Street, Madurai,
Tamilnadu - 625001
Tel: 0452-3720898 / 99

PONDICHERY

Anchor Electricals Pvt. Ltd.
201, 1st Floor, Mission Street,
Pondicherry, Tamilnadu - 605001
Tel: 0413-3190071 / 3190081

